

May Awareness

From your friends at Georgetown SEPAC

Celiac Disease

Awareness Month

Celiac disease is an autoimmune reaction to eating glute, a protein found in wheat, barley, and rye.

Question: Can you introduce yourself?

Answer: I'm Ryder DeLuca. I'm in the third grade and I was diagnosed with Celiac Disease when I was 8 years old.

Question: Is there anything you want people to know about Celiac Disease?

Answer: It's fine to have Celiac because you can still have anything you like, it might just taste a little different because it has to be made gluten free.

Question: Are there any foods you miss the most?

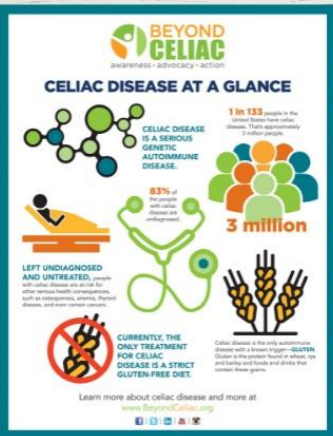
Answer: Twinkies and Hostess! I also miss eating at any restaurant we want to because some don't understand how to make food safe for me and I get sick.

Question: What happens if you eat something that has gluten in it?

Answer: I get really sick and it can take a few days or a few weeks before I feel better.



Ryder DeLuca is a 3rd grader at Windham Woods School but lives in Georgetown. Ryder was diagnosed with Celiac Disease when he was 8 years old.



Osteogenesis Imperfecta Awareness



OI, or "brittle bone disease," is a condition causing fragile bones that break easily, sometimes for no obvious reason. Some people with OI have only a few fractures in their lifetimes. Others have hundreds. People who have severe forms of OI have fragile bones that are also deformed.

Brittle Bone Society

Wishbone Day

“ OI is more than just bones that break ”

Other potential symptoms of OI:

- fatigue
- hearing loss
- blue sclerae
- scoliosis
- dentinogenesis imperfecta
- loose joints

Raise Awareness of Osteogenesis Imperfecta (OI) with the Brittle Bone Society on Wishbone Day
May 6th

#OIStrong

together we are Strong

Share your story, a picture, a video, a photo, or drawing, a quote or whatever you prefer to participate in the Wishbone Day initiative for 2021. And remember to wear yellow!

#WISHBONEDAY
INTERNATIONAL DAY OF OSTEOGENESIS IMPERFECTA (OI)

Mild Moderate Severe

So Osteogenesis Imperfecta is a spectrum of disorders...